

LONG ENGINEERING, INC.

SURVEY CONTROL PACKET

VERSION NUMBER: 2.1

DATE: 02/23/2018

PROJECT NUMBER: MPIP1800292

P.I. NUMBER: 0001757

DESCRIPTION: SR-400 EXPRESS LANES

NOTES: HORIZONTAL DATUM = NAD83(1994)
VERTICAL DATUM = NAVD88
GEORGIA WEST ZONE

LENGTH: APPROXIMATELY 15.1 MILES

COUNTY: FULTON / FORSYTH

Prepared By:
LONG
ENGINEERING, INC.

2550 Heritage Ct
Suite 250
Atlanta, Georgia 30339
Tel 770.951.2495
Fax 770.951.2496
www.longeng.com

LONG ENGINEERING, INC.

2550 Heritage Ct., Suite 250
Atlanta, Georgia 30339
Phone: 770.951.2495 Fax: 770.951.2496

P.I. NUMBER: 0001757

LENGTH: APPROXIMATELY 15.1 MILES
DATE: 12-31-2017
COUNTY: FULTON / FORSYTH

DESCRIPTION: SR-400 EXPRESS LANES

ZONE: GEORGIA WEST
HORIZONTAL DATUM: NAD83(1994)
VERTICAL DATUM: NAVD88
UNIT OF MEASUREMENT: US SURVEY FOOT
COMBINED SCALE FACTORS: 0.99985708

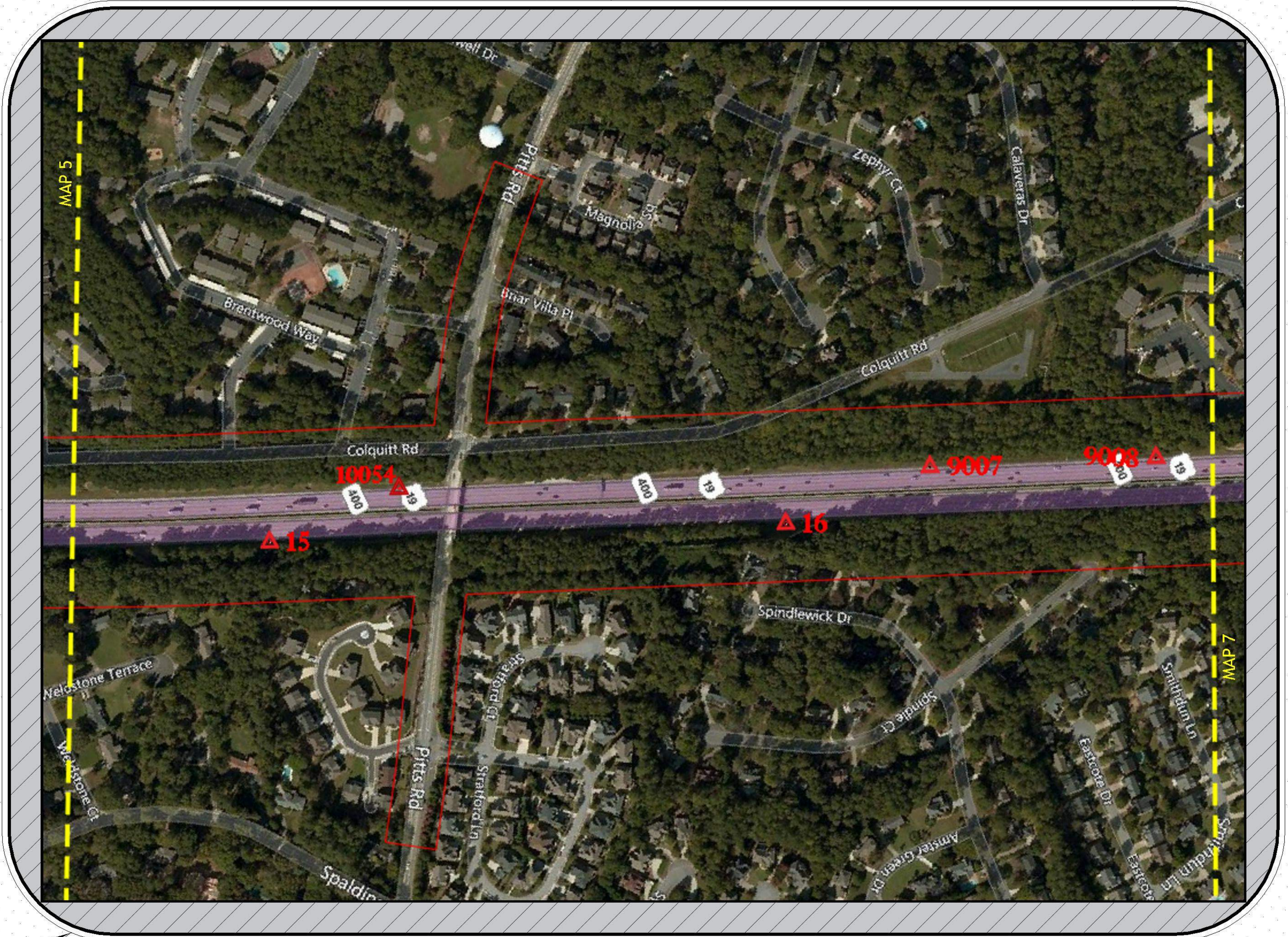
NOTES: This Control package consists of three other existing control packages, supplied by GDOT. The Horizontal Datum is based upon the existing control packages. Control packages and the PI's used are as follows: PI No. 721850 (NAD83-2007), by LandAir, PI No. 0001757 (NAD83-1994), by LandAir, and PI No. 0007526 (NAD83-1994, by Moreland Altobelli & Associates. Points were recovered and verified through conventional traverse methodology, utilizing Geomax Zoom 90, a 1 second robotic instrument and a Leica TS06, a 2 second conventional instrument. The control was densified, as needed. In one section, the control was enhanced by 2 hours of static GPS sessions, utilizing Leica GS14 receivers and based on the existing points that were recovered. Vertical Datum is NAVD88 and verified, revised, or enhanced by differential leveling from and through all known points from the control packages, and any new points set for densification. Vertical datum was compiled using a Leica 250M, a digital Level. 32 Original control points were recovered and was able to hold and fix 31 original control points. All points set by Long are 5/8" rebar with cap, marked LONG ENG.

Prepared By:
LONG
ENGINEERING, INC.

2550 Heritage Ct
Suite 250
Atlanta, Georgia 30339
Tel 770.951.2495
Fax 770.951.2496
www.longeng.com

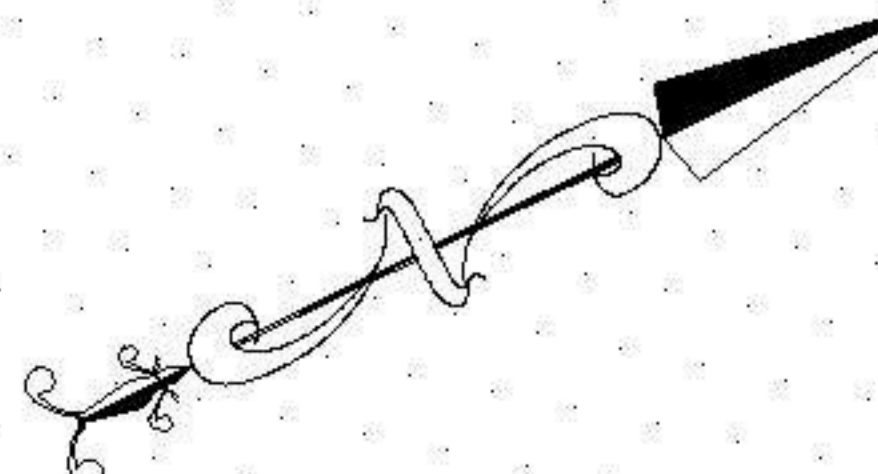
LONG ENGINEERING, INC.

DELTA LOCATION MAP 6 OF 27



PI:0001757

MAP NOT TO SCALE



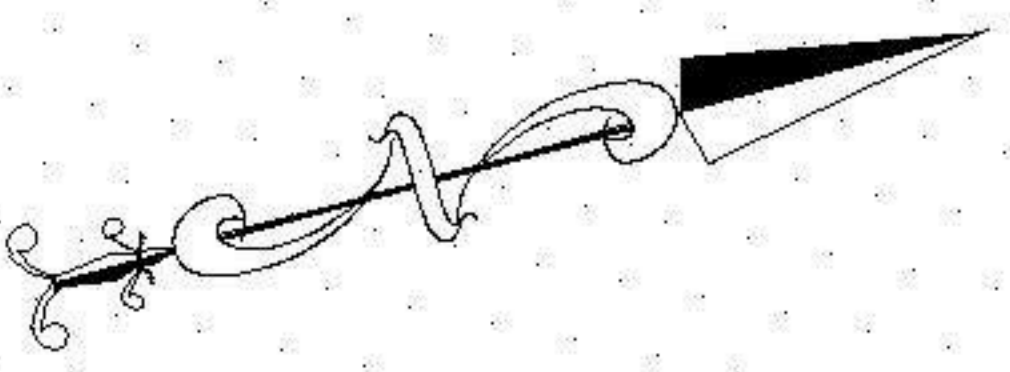
LONG ENGINEERING, INC.

DELTA LOCATION MAP 8 OF 27



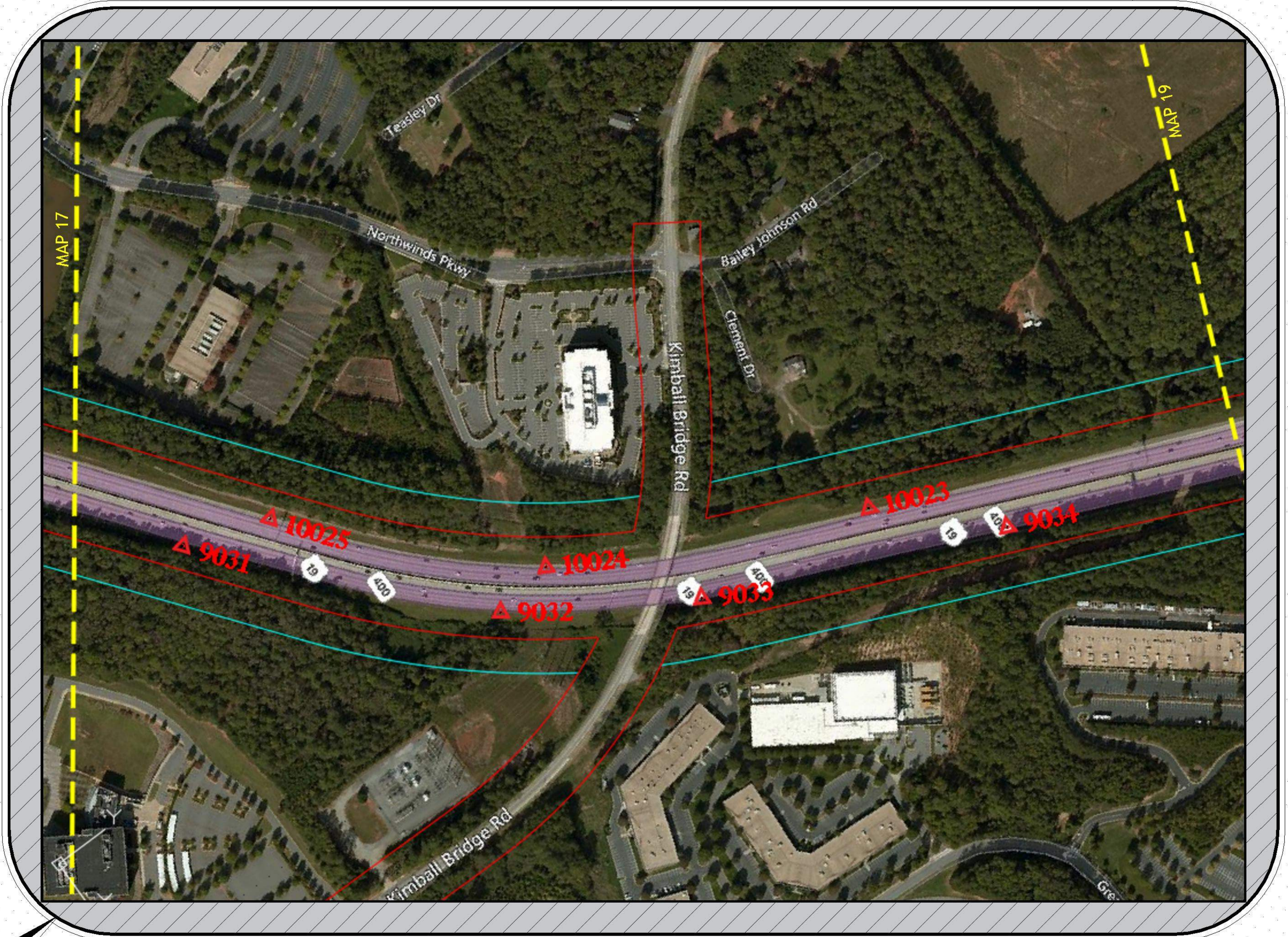
PI:0001757

MAP NOT TO SCALE



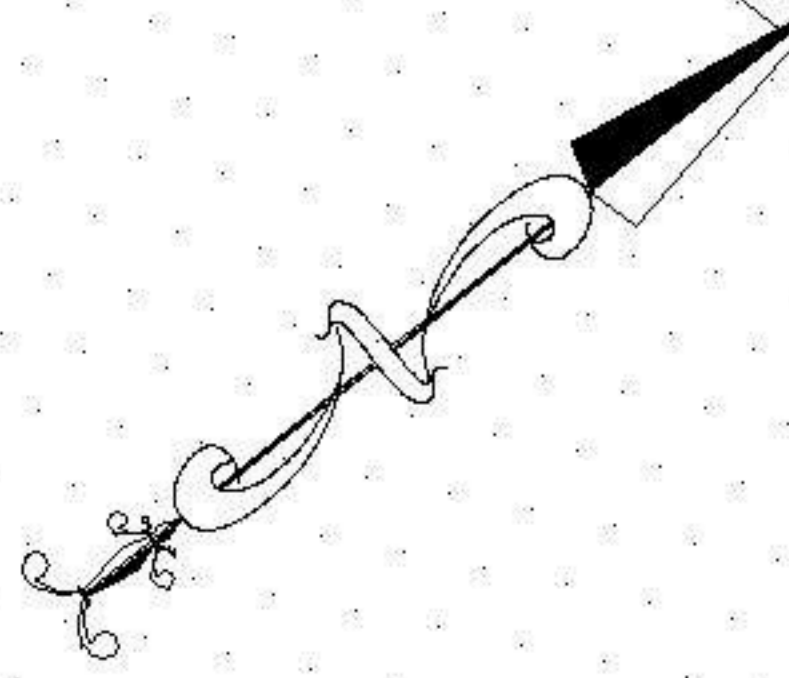
LONG ENGINEERING, INC.

DELTA LOCATION MAP 18 OF 27



PI:0001757

MAP NOT TO SCALE



LONG ENGINEERING, INC.

2550 Heritage Ct., Suite 250
Atlanta, Georgia 30339
Phone: 770.951.2495 Fax: 770.951.2496

PT#	NORTHING	EASTING	ELEVATION	DESCRIPTION
5	1431217.5800	2238678.4100	1072.418	5/8 REBAR
9	1437492.0600	2238705.9000	983.120	SLCD
10	1438087.4600	2238774.8100	990.970	SLCD
11	1439120.5500	2239061.0300	1007.110	SLCD
12	1440007.3400	2239495.1700	1027.948	SLCD
13	1441197.0400	2240189.1700	1065.330	SLCD
14	1442010.0900	2240662.5500	1059.435	SLCD
15	1443724.6900	2241513.1400	1036.140	SLCD
16	1445119.4900	2242104.4400	1035.960	SLCD
17	1447278.5400	2242827.2100	1071.693	SLCD
20	1453332.7400	2244858.4200	993.940	SLCD
21	1455343.0500	2244984.2700	949.070	SLCD
22	1457190.3600	2245345.7600	932.580	SLCD
25	1462316.8000	2248497.0200	998.390	SLCD
26	1463488.6200	2249216.5600	1021.790	SLCD
27	1464565.2500	2249867.1800	1005.880	SLCD
31	1470146.8500	2253523.4900	1041.500	SLCD
826	1446976.4988	2242875.9842	1070.456	SLCD
849	1426968.1676	2238673.7723	1009.92	5/8 REBAR
850	1428019.9447	2238505.4346	1048.80	5/8 REBAR
1014	1489632.9030	2269886.6016	1024.472	SLCD(MORELAND 14)
1015	1488336.7986	2268853.8922	1050.148	SLCD(MORELAND 15)
1017	1491654.3048	2272278.0657	1014.108	SLCD(MORELAND 17)
1018	1492432.2356	2273168.5906	1048.347	SLCD(MORELAND 18)
1019	1492995.6806	2273804.1064	1061.620	SLCD(MORELAND 19)
1020	1494090.3780	2275101.4593	1076.657	SLCD(MORELAND 20)
1021	1494687.7929	2275980.0366	1085.260	SLCD(MORELAND 21)
1022	1495167.9440	2276804.7681	1086.850	SLCD(MORELAND 22)
1023	1496084.2259	2278466.4465	1042.930	SLCD(MORELAND 23)
1024	1496755.5192	2279684.9815	1060.719	SLCD(MORELAND 24)
1355	1428741.8600	2238683.4900	1075.780	5/8 REBAR
1406	1429583.2737	2238681.8800	1096.332	5/8 REBAR
1407	1430433.4915	2238667.8520	1087.639	5/8 REBAR
9000	1432800.3993	2238693.8278	1088.370	TRV 5/8" RBS(D)
9001	1433558.1185	2238657.4341	1071.935	TRV 5/8" RBS(D)
9002	1434645.0296	2238617.4802	1037.202	TRV PKS(D)
9003	1435907.1869	2238638.2434	995.260	TRV 5/8" RBS(D)
9004	1436451.0918	2238657.0314	977.624	TRV 5/8" RBS(D)
9005	1436950.3383	2238694.1280	975.618	TRV 5/8" RBS(D)
9006	1440787.5866	2240003.4979	1072.805	TRV 5/8" RBS(D)

LONG ENGINEERING, INC.

2550 Heritage Ct., Suite 250
Atlanta, Georgia 30339
Phone: 770.951.2495 Fax: 770.951.2496

PT#	NORTHING	EASTING	ELEVATION	DESCRIPTION
9007	1445573.3378	2242132.4986	1037.400	TRV 5/8" RBS(D)
9008	1446185.2977	2242389.1099	1050.540	TRV 5/8" RBS(D)
9009	1448134.0131	2243201.5874	1065.386	TRV 5/8" RBS(D)
9010	1448308.2042	2243478.8312	1060.582	TRV 5/8" RBS(D)
9011	1449002.8637	2243745.0052	1052.930	TRV 5/8" RBS(D)
9012	1450167.3423	2244215.2916	1054.056	TRV 5/8" RBS(D)
9013	1451199.0557	2244499.8394	1057.237	TRV 5/8" RBS(D)
9014	1452057.7576	2244680.3951	1033.904	TRV 5/8" RBS(D)
9015	1454923.4364	2245075.8864	953.962	TRV 5/8" RBS(D)
9016	1456372.8733	2245132.5620	940.980	TRV 5/8" RBS(D)
9017	1458133.3696	2245748.3568	916.819	TRV 5/8" RBS(D)
9018	1459363.1943	2246677.5673	902.982	TRV 5/8" RBS(D)
9019	1461071.5947	2247715.8037	953.675	TRV PKS(D)
9020	1465821.2795	2250600.0108	974.874	TRV 5/8" RBS(D)
9021	1467185.7354	2251421.8866	965.773	TRV PKS(D)
9022	1468569.4389	2252292.9646	988.577	TRV PKS(D)
9023	1469449.7661	2252926.7707	1022.207	TRV PKS(D)
9024	1471775.7015	2254899.7597	1016.697	TRV 5/8" RBS(D)
9025	1472721.0606	2255770.8481	1021.770	TRV PKS(D)
9026	1473296.0261	2256565.8082	1031.612	TRV PKS(D)
9027	1473788.6556	2257615.1704	1043.162	TRV 5/8" RBS(D)
9028	1474320.3224	2259159.5192	1033.730	TRV PKS(D)
9029	1474790.2019	2260489.8919	1058.513	TRV 5/8" RBS(D)
9030	1475034.1798	2261286.1486	1047.016	TRV 5/8" RBS(D)
9031	1475992.8211	2262500.4059	1041.013	TRV 5/8" RBS(D)
9032	1476629.6411	2263209.0211	1077.738	TRV 5/8" RBS(D)
9033	1477129.1927	2263525.5779	1087.366	TRV 5/8" RBS(D)
9034	1477975.4366	2263887.7731	1073.238	TRV 5/8" RBS(D)
9035	1479468.3198	2264528.4045	1018.958	TRV 5/8" RBS(GPS/D)
9036	1480762.3852	2265085.5079	1010.948	TRV 5/8" RBS(GPS/D)
9037	1482207.7313	2265714.0912	1017.355	TRV 5/8" RBS(D)
9038	1483310.7887	2266186.1024	1041.356	TRV 5/8" RBS(D)
9039	1484700.5460	2266782.5199	1086.009	TRV 5/8" RBS(D)
9040	1485470.5485	2267114.4566	1097.544	TRV PKS(D)
9041	1486647.5860	2267610.4290	1102.360	TRV PKS(D)
9042	1487712.1197	2268223.8749	1072.517	TRV 5/8" RBS(D)
9043	1490251.5086	2270579.8599	1021.411	TRV 5/8" RBS(D)
9044	1490403.6808	2270943.2211	1019.852	TRV 5/8" RBS(D)
10000	1497534.0181	2280448.8097	1057.973	TRV 5/8" RBS(D)
10001	1498852.9025	2281250.0589	1021.343	TRV 5/8" RBS(D)

LONG ENGINEERING, INC.

2550 Heritage Ct., Suite 250
Atlanta, Georgia 30339
Phone: 770.951.2495 Fax: 770.951.2496

PT#	NORTHING	EASTING	ELEVATION	DESCRIPTION
10002	1499687.9821	2281611.8577	1013.682	TRV 5/8" RBS(D)
10003	1497889.7879	2280478.0828	1049.448	TRV 5/8" RBS(D)
10004	1497180.6290	2279943.3044	1059.183	TRV 5/8" RBS(D)
10005	1496665.2952	2279229.3155	1052.140	TRV 5/8" RBS(D)
10006	1495923.4906	2277856.9765	1050.789	TRV 5/8" RBS(D)
10007	1495173.4194	2276515.7419	1091.090	TRV 5/8" RBS(D)
10008	1494477.9067	2275382.5960	1082.545	TRV 5/8" RBS(D)
10009	1493303.6038	2273857.6376	1061.737	TRV 5/8" RBS(D)
10010	1492234.3705	2272717.5464	1035.085	TRV 5/8" RBS(D)
10011	1491157.6412	2271524.1150	1015.672	TRV 5/8" RBS(D)
10014	1488929.8038	2269218.7810	1034.934	TRV PKS(D)
10015	1488192.4824	2268437.2283	1062.030	TRV 5/8" RBS(D)
10016	1487339.1285	2267783.1619	1093.471	TRV 5/8" RBS(D)
10017	1486440.1156	2267378.6649	1106.451	TRV 5/8" RBS(D)
10018	1485065.2986	2266770.9624	1092.077	TRV 5/8" RBS(D)
10019	1483678.2883	2266187.3734	1051.852	TRV PKS(D)
10020	1482249.1758	2265575.9932	1017.775	TRV 5/8" RBS(D)
10021	1480758.2864	2264929.4630	1011.341	TRV 5/8" RBS(D)
10022	1479363.7444	2264332.3467	1022.069	TRV 5/8" RBS(D)
10023	1477681.3250	2263602.1327	1082.608	TRV 5/8" RBS(D)
10024	1476815.3943	2263181.4781	1076.224	TRV PKS(D)
10025	1476247.2817	2262587.6282	1051.008	TRV PKS(D)
10026	1475619.7436	2261765.9447	1027.782	TRV 5/8" RBS(D)
10027	1475138.8431	2260996.6302	1049.846	TRV 5/8" RBS(D)
10028	1474816.6735	2260147.2676	1057.529	TRV PKS(D)
10029	1474313.6053	2258675.8282	1034.860	TRV 5/8" RBS(D)
10030	1473903.0414	2257423.3996	1042.632	TRV 5/8" RBS(D)
10031	1473259.4136	2256244.0606	1029.736	TRV 5/8" RBS(D)
10032	1472366.2637	2255218.6465	1017.534	TRV 5/8" RBS(D)
10033	1471310.5538	2254312.7595	1026.878	TRV 5/8" RBS(D)
10034	1470333.5262	2253491.2534	1042.449	TRV 5/8" RBS(D)
10035	1469460.3617	2252758.7394	1020.842	TRV 5/8" RBS(D)
10036	1468209.0533	2251871.5940	971.884	TRV 5/8" RBS(D)
10037	1466812.5805	2251035.5275	968.476	TRV 5/8" RBS(D)
10038	1465838.2387	2250455.9124	975.475	TRV 5/8" RBS(D)
10039	1464328.5472	2249499.7562	1020.533	TRV 5/8" RBS(D)
10040	1463090.4058	2248769.9699	1015.916	TRV 5/8" RBS(D)
10041	1461763.8248	2247953.0466	975.036	TRV PKS(D)
10042	1460214.8437	2247022.3667	924.893	TRV 5/8" RBS(D)
10043	1459034.2983	2246309.9958	900.813	TRV PKS(D)

LONG ENGINEERING, INC.

2550 Heritage Ct., Suite 250
Atlanta, Georgia 30339
Phone: 770.951.2495 Fax: 770.951.2496

PT#	NORTHING	EASTING	ELEVATION	DESCRIPTION
10044	1457991.7044	2245849.0728	916.868	TRV PKS(D)
10045	1457173.1816	2245489.7274	930.158	TRV 5/8" RBS(D)
10046	1456611.5275	2245323.0420	936.648	TRV 5/8" RBS(D)
10047	1456133.6592	2245231.6466	941.829	TRV PKS(D)
10048	1455573.3989	2245161.1579	947.682	TRV PKS(D)
10050	1452589.1726	2244606.5200	1016.707	TRV 5/8" RBS(D)
10051	1451581.4781	2244442.2731	1047.962	TRV 5/8" RBS(D)
10052	1450628.4857	2244188.0788	1056.460	TRV 5/8" RBS(D)
10053	1449639.9742	2243833.8743	1047.898	TRV 5/8" RBS(D)
10054	1444135.2953	2241531.3318	1037.922	TRV 5/8" RBS(D)
10055	1442658.7908	2240856.6631	1046.041	TRV 5/8" RBS(D)
10056	1441491.1966	2240185.8440	1067.606	TRV 5/8" RBS(D)
10057	1440854.0274	2239750.5989	1071.509	TRV 5/8" RBS(D)
10058	1439289.5526	2238965.8647	1011.102	TRV 5/8" RBS(D)
10059	1437765.4376	2238578.0045	988.487	TRV 5/8" RBS(D)
10060	1436285.1607	2238508.9663	983.378	TRV PKF (D)
10061	1455849.0901	2245059.3132	945.184	TRV 5/8" RBS(D)
10062	1454179.4487	2244832.4956	969.195	TRV 5/8" RBS(D)

LONG ENGINEERING, INC.

HORIZONTAL CONTROL DELTA
STATION NAME: #15

P.I. Number: 0001757 County: FULTON State Plane Zone: GA WEST

Described By: M.T.ALLIGOOD Date: 12/31/2017 Units of Measure: US SURVEY FT.

Horizontal Datum: NAD83(1994) Vertical Datum: NAVD88 Elevation: 1036.140

Northing (Y): 1443724.6900 Easting (X): 2241513.1400

Visible From Ground To: #14 Visible From Ground To: #16

Horizontal Control Used: CONTROL PACKAGES: PI:001757 , 721850 , 0007526

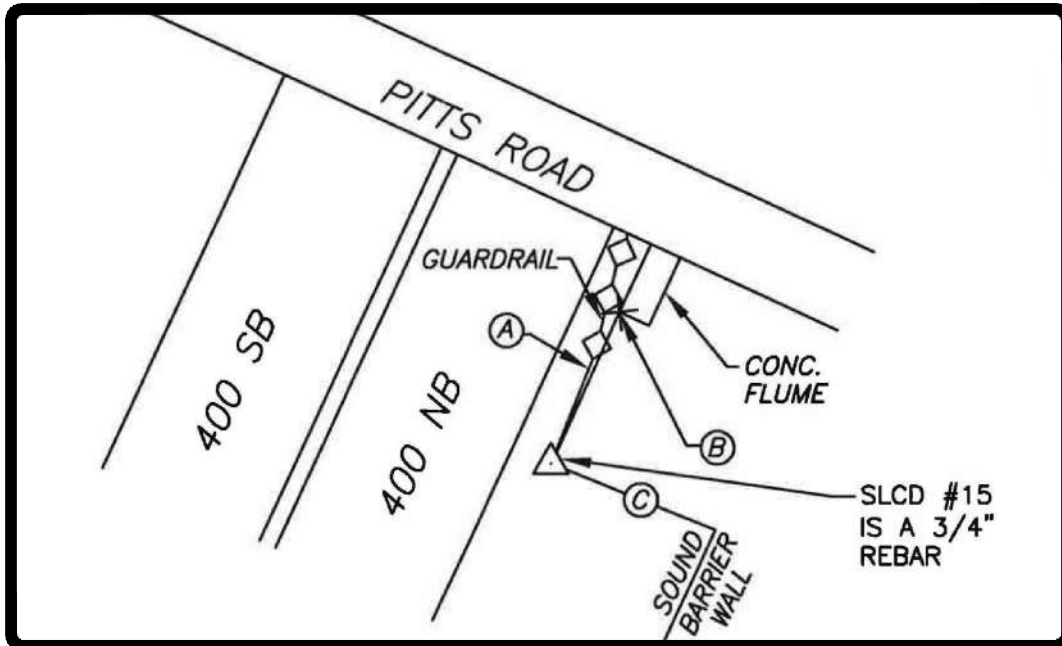
Horizontal Order Accuracy: 3RD

Vertical Control Used: CONTROL PACKAGES: PI:001757 , 721850 , 0007526

Vertical Order Accuracy: 3RD

To Reach: FROM THE INTERSECTION OF GA 400 NB AND THE SPALDING
 DRIVE OVERPASS, HEAD NORTH ALONG GA 400 FOR A DISTANCE
 OF 0.9 MI. TO THE STATION ON THE RIGHT

Sketch:



 #15
 3/4" REBAR

Prepared By:
LONG
ENGINEERING, INC.

2550 Heritage Ct
Suite 250
Atlanta, Georgia 30339
Tel 770.951.2495
Fax 770.951.2496
www.longeng.com

- (A) 37.7' FROM END OF GUARDRAIL. S 22° E
- (B) 105.5' FROM END OF CONCRETE FLUME. S 27° W
- (C) 71.6' FROM END OF SOUND BARRIER WALL. N 68° W

LONG ENGINEERING, INC.

HORIZONTAL CONTROL DELTA
STATION NAME: #16

P.I. Number: 0001757 County: FULTON State Plane Zone: GA WEST

Described By: M.T.ALLIGOOD Date: 12/31/2017 Units of Measure: US SURVEY FT.

Horizontal Datum: NAD83(1994) Vertical Datum: NAVD88 Elevation: 1035.960

Northing (Y): 1445119.4900 Easting (X): 2242104.4400

Visible From Ground To: #15 Visible From Ground To: #9007

Horizontal Control Used: CONTROL PACKAGES: PI:001757 , 721850 , 0007526

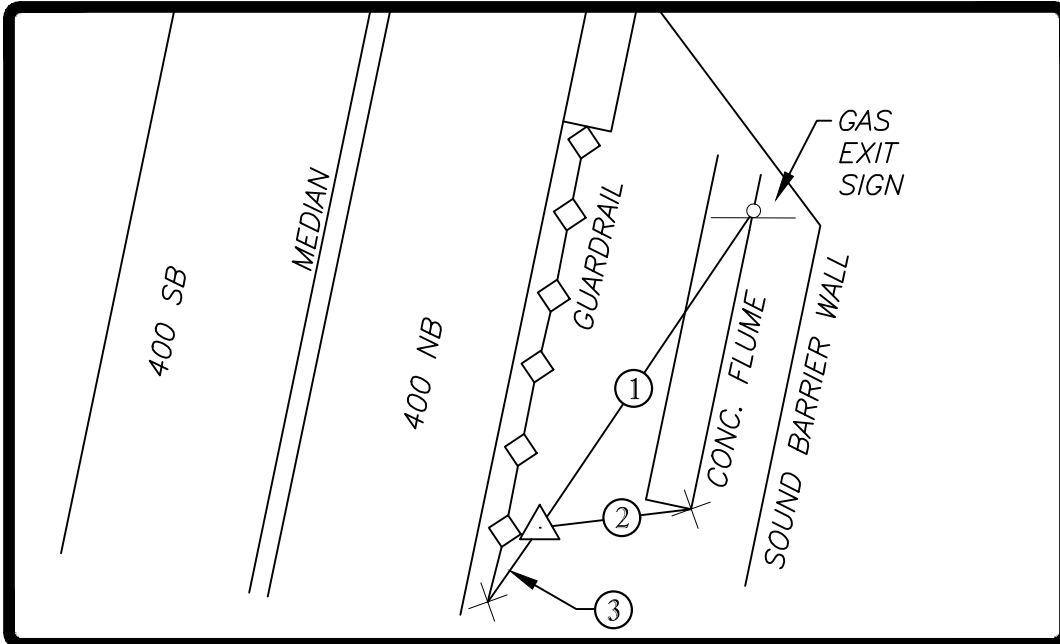
Horizontal Order Accuracy: 3RD

Vertical Control Used: CONTROL PACKAGES: PI:001757 , 721850 , 0007526

Vertical Order Accuracy: 3RD

To Reach: FROM THE INTERSECTION OF GA 400 NB AND THE PITTS
ROAD OVERPASS, HEAD NORTH ALONG GA 400 FOR A DISTANCE
OF 0.2 MI. TO THE STATION ON THE RIGHT

Sketch:



 #16
 3/4" REBAR

Prepared By:
LONG
ENGINEERING, INC.

2550 Heritage Ct
Suite 250
Atlanta, Georgia 30339
Tel 770.951.2495
Fax 770.951.2496
www.longeng.com

- ①. 34.1' FROM 18" CMP. N 55° W
- ②. 7.3' FROM END OF CONCRETE FLUME. N 30° E
- ③. 82.5' FROM END OF GUARDRAIL. N 39° E

LONG ENGINEERING, INC.

HORIZONTAL CONTROL DELTA
STATION NAME: #9007

P.I. Number: 0001757 County: FULTON State Plane Zone: GA WEST

Described By: T. WOMACK III Date: 12/31/2017 Units of Measure: US SURVEY FT.

Horizontal Datum: NAD83(1994) Vertical Datum: NAVD88 Elevation: 1037.400

Northing (Y): 1445573.3378 Easting (X): 2242132.4986

Visible From Ground To: #16 Visible From Ground To: #9008

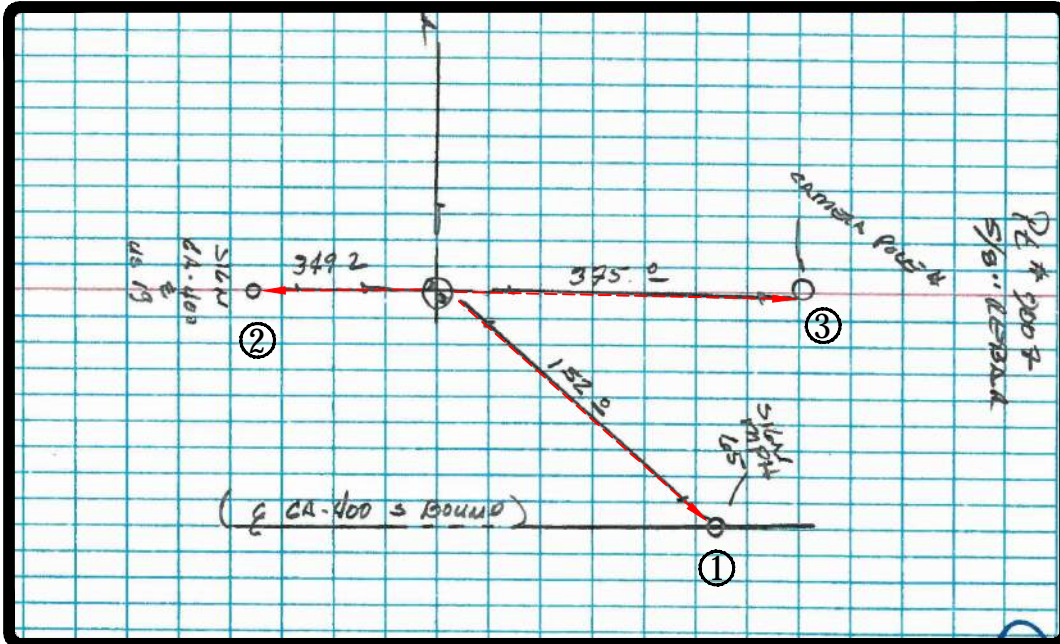
Horizontal Control Used: CONTROL PACKAGES: PI:001757 , 721850 , 0007526

Vertical Control Used: CONTROL PACKAGES: PI:001757 , 721850 , 0007526 Horizontal Order Accuracy: 3RD

Vertical Order Accuracy: 3RD

To Reach: FROM THE INTERSECTION OF GA 400 SB AND THE
 NORTHRIDGE ROAD OVERPASS, HEAD SOUTH ALONG GA 400 FOR
 A DISTANCE OF 0.64 MI. TO THE STATION ON THE RIGHT

Sketch:



Prepared By:

LONG
ENGINEERING, INC.

2550 Heritage Ct
Suite 250
Atlanta, Georgia 30339
Tel 770.951.2495
Fax 770.951.2496
www.longeng.com

 #9007
 5/8" REBAR

① 152.0' FROM SIGN "65 MPH".

② 349.2' FROM SIGN "GA 400 / US 19".

③ 375.0' FROM CAMERA POLE.

LONG ENGINEERING, INC.

HORIZONTAL CONTROL DELTA
STATION NAME: #9008

P.I. Number: 0001757 County: FULTON State Plane Zone: GA WEST

Described By: T. WOMACK III Date: 12/31/2017 Units of Measure: US SURVEY FT.

Horizontal Datum: NAD83(1994) Vertical Datum: NAVD88 Elevation: 1050.54

Northing (Y): 1446185.2977 Easting (X): 2242389.1099

Visible From Ground To: #9007 Visible From Ground To: #17

Horizontal Control Used: CONTROL PACKAGES: PI:001757, 721850, 0007526

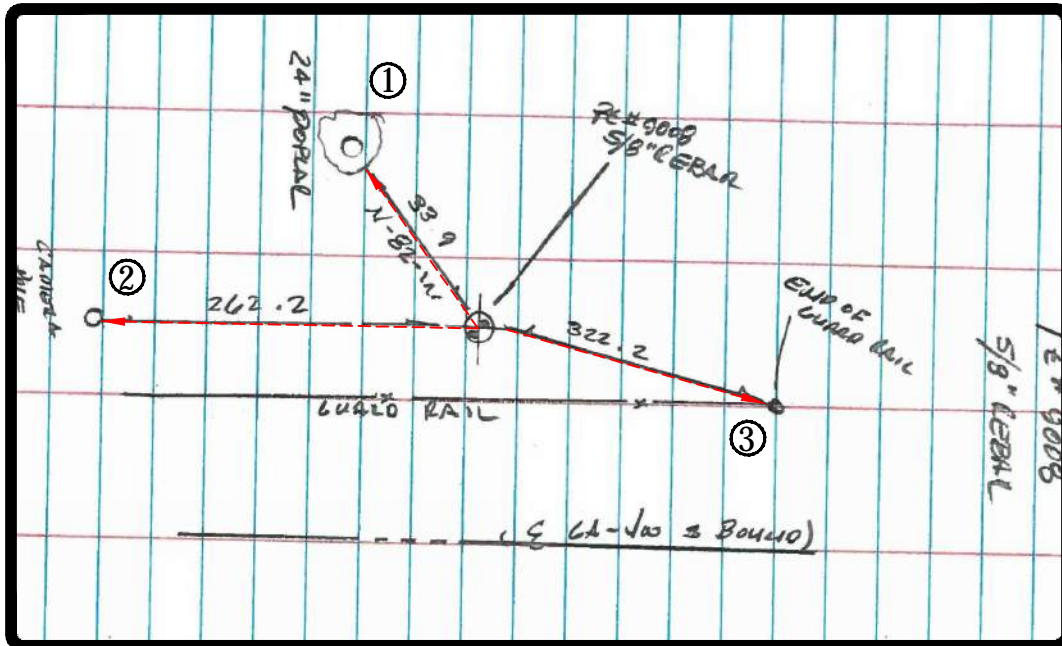
Vertical Control Used: CONTROL PACKAGES: PI:001757, 721850, 0007526

Horizontal Order Accuracy: 3RD

Vertical Order Accuracy: 3RD

To Reach: FROM THE INTERSECTION OF GA 400 SB AND THE
NORTHRIDGE ROAD OVERPASS, HEAD SOUTH ALONG GA 400 FOR
A DISTANCE OF 0.50 MI. TO THE STATION ON THE RIGHT

Sketch:



Prepared By:

LONG
ENGINEERING, INC.

2550 Heritage Ct
Suite 250
Atlanta, Georgia 30339
Tel 770.951.2495
Fax 770.951.2496
www.longeng.com

#9008

5/8" REBAR

① 33.9' FROM 24" POPLAR TREE.

② 262.2' FROM CAMERA POLE.

③ 322.2' FROM END OF GUARDRAIL.

LONG ENGINEERING, INC.

HORIZONTAL CONTROL DELTA
STATION NAME: #9012

P.I. Number: 0001757 County: FULTON State Plane Zone: GA WEST

Described By: T. WOMACK III Date: 12/31/2017 Units of Measure: US SURVEY FT.

Horizontal Datum: NAD83(1994) Vertical Datum: NAVD88 Elevation: 1054.056

Northing (Y): 1450167.3423 Easting (X): 2244215.2916

Visible From Ground To: #9011 Visible From Ground To: #9013

Horizontal Control Used: CONTROL PACKAGES: PI:001757, 721850, 0007526

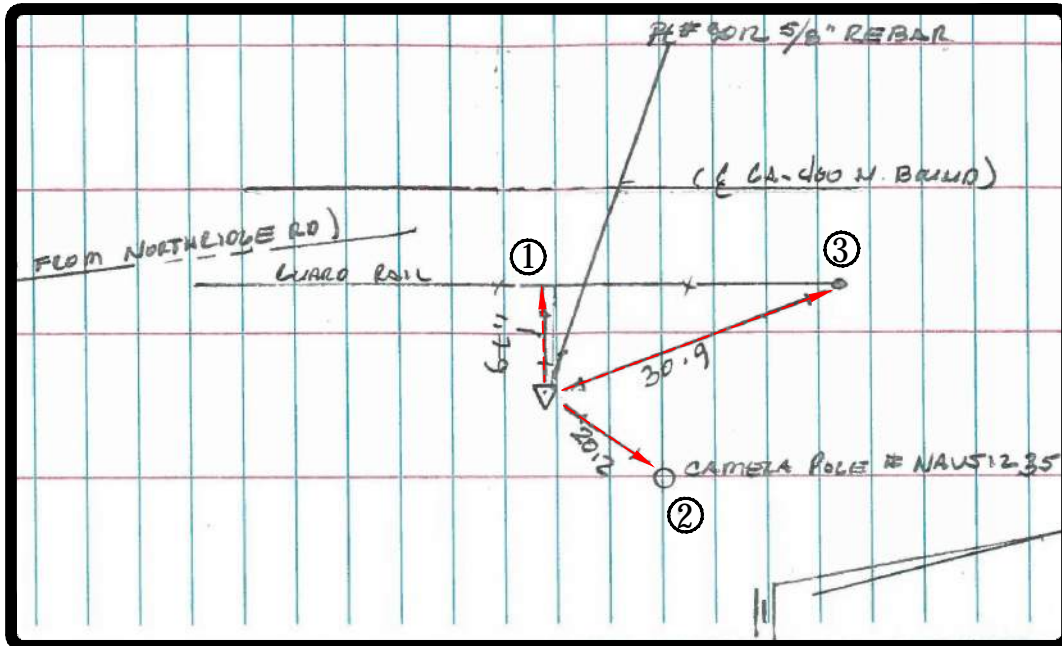
Horizontal Order Accuracy: 3RD

Vertical Control Used: CONTROL PACKAGES: PI:001757, 721850, 0007526

Vertical Order Accuracy: 3RD

To Reach: FROM THE INTERSECTION OF GA 400 NB AND THE
NORTHRIDGE ROAD OVERPASS, HEAD NORTH ALONG GA 400
FOR A DISTANCE OF 0.3 MI. TO THE STATION ON THE RIGHT

Sketch:



Prepared By:

LONG
ENGINEERING, INC.

2550 Heritage Ct
Suite 250
Atlanta, Georgia 30339
Tel 770.951.2495
Fax 770.951.2496
www.longeng.com

#9011
5/8" REBAR

- ① 1.8' FROM EDGE OF GUARDRAIL.
- ② 20.1' FROM CAMERA POLE.
- ③ 30.9 FROM END OF GUARDRAIL.

LONG ENGINEERING, INC.

HORIZONTAL CONTROL DELTA
STATION NAME: #9013

P.I. Number: 0001757 County: FULTON State Plane Zone: GA WEST

Described By: T. WOMACK III Date: 12/31/2017 Units of Measure: US SURVEY FT.

Horizontal Datum: NAD83(1994) Vertical Datum: NAVD88 Elevation: 1057.237

Northing (Y): 1451199.0558 Easting (X): 2244499.8394

Visible From Ground To: #9012 Visible From Ground To: #9014

Horizontal Control Used: CONTROL PACKAGES: PI:001757, 721850, 0007526

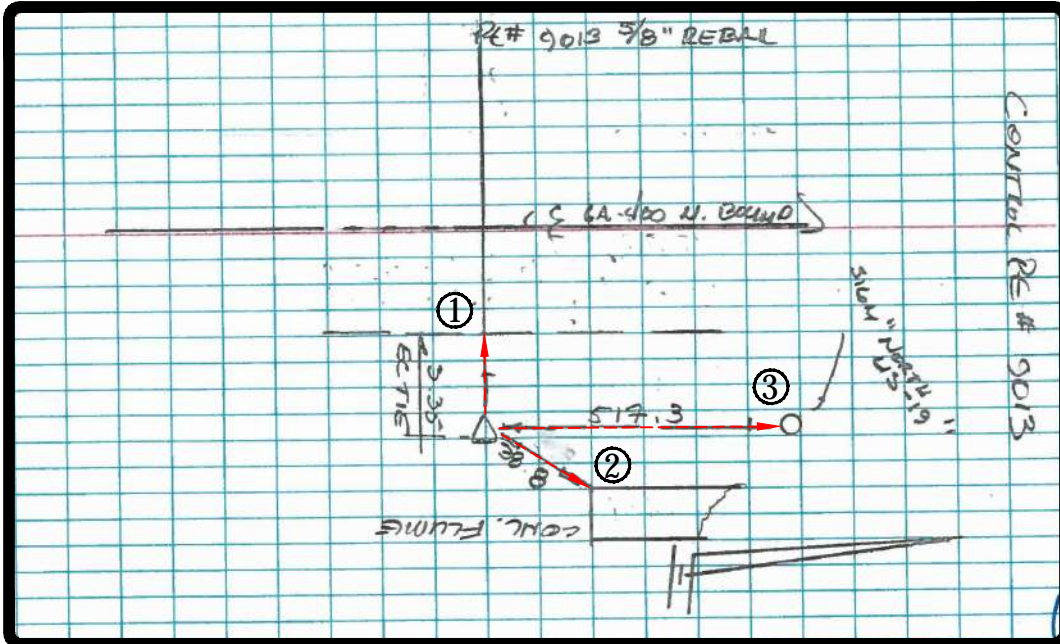
Vertical Control Used: CONTROL PACKAGES: PI:001757, 721850, 0007526

Horizontal Order Accuracy: 3RD

Vertical Order Accuracy: 3RD

To Reach: FROM THE INTERSECTION OF GA 400 NB AND THE
NORTHRIDGE ROAD OVERPASS, HEAD NORTH ALONG GA 400
FOR A DISTANCE OF 0.5 MI. TO THE STATION ON THE RIGHT

Sketch:



Prepared By:

LONG
ENGINEERING, INC.

2550 Heritage Ct
Suite 250
Atlanta, Georgia 30339
Tel 770.951.2495
Fax 770.951.2496
www.longeng.com

#9013
5/8" REBAR

- ① 3.35' FROM EDGE OF CONCRETE.
- ② 20.1' FROM SOUTHWEST CORNER OF FLUME.
- ③ 517.3' FROM SIGN "NORTH US-19".

LONG ENGINEERING, INC.

HORIZONTAL CONTROL DELTA
STATION NAME: #9014

P.I. Number: 0001757 County: FULTON State Plane Zone: GA WEST

Described By: T. WOMACK III Date: 12/31/2017 Units of Measure: US SURVEY FT.

Horizontal Datum: NAD83(1994) Vertical Datum: NAVD88 Elevation: 1033.904

Northing (Y): 1452057.7576 Easting (X): 2244680.3951

Visible From Ground To: #9013 Visible From Ground To: #20

Horizontal Control Used: CONTROL PACKAGES: PI:001757, 721850, 0007526

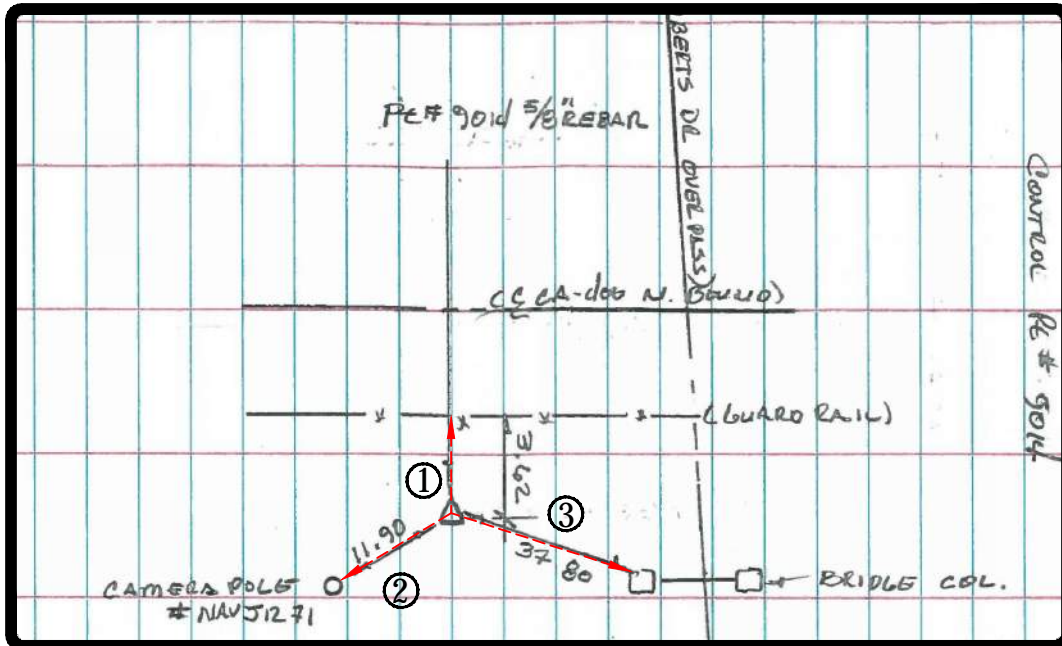
Vertical Control Used: CONTROL PACKAGES: PI:001757, 721850, 0007526

Horizontal Order Accuracy: 3RD

Vertical Order Accuracy: 3RD

To Reach: FROM THE INTERSECTION OF GA 400 NB AND THE
NORTHRIDGE ROAD OVERPASS, HEAD NORTH ALONG GA 400
FOR A DISTANCE OF 0.7 MI. TO THE STATION ON THE RIGHT

Sketch:



#9014
5/8" REBAR

Prepared By:
LONG
ENGINEERING, INC.

2550 Heritage Ct
Suite 250
Atlanta, Georgia 30339
Tel 770.951.2495
Fax 770.951.2496
www.longeng.com

- ① 3.6' FROM GUARDRAIL.
- ② 11.9' FROM CAMERA POLE.
- ③ 37.8' FROM SOUTHWEST CORNER OF BRIDGE COLUMN.

LONG ENGINEERING, INC.

HORIZONTAL CONTROL DELTA
STATION NAME: #9031

P.I. Number: 0001757 County: FULTON State Plane Zone: GA WEST

Described By: T. WOMACK III Date: 12/31/2017 Units of Measure: US SURVEY FT.

Horizontal Datum: NAD83(1994) Vertical Datum: NAVD88 Elevation: 1041.013

Northing (Y): 1475992.8211 Easting (X): 2262500.4059

Visible From Ground To: #9030 Visible From Ground To: #9032

Horizontal Control Used: CONTROL PACKAGES: PI:001757, 721850, 0007526

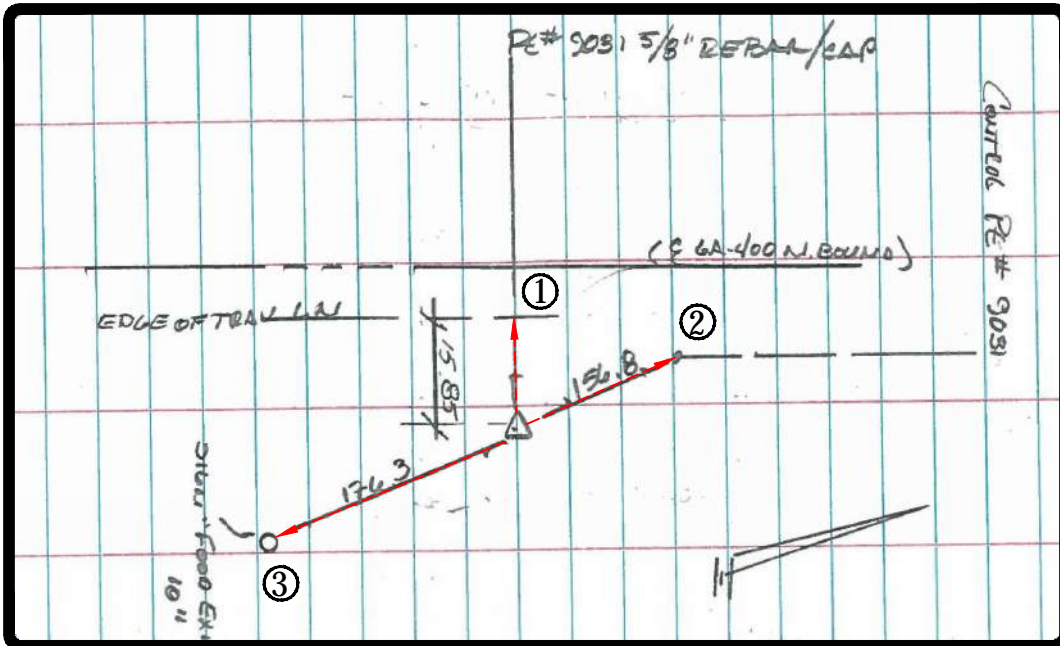
Horizontal Order Accuracy: 3RD

Vertical Control Used: CONTROL PACKAGES: PI:001757, 721850, 0007526

Vertical Order Accuracy: 3RD

To Reach: FROM THE INTERSECTION OF GA 400 NB AND THE HAYNES
BRIDGE ROAD OVERPASS, HEAD NORTH ALONG GA 400 FOR A
DISTANCE OF 0.4 MI. TO THE STATION ON THE RIGHT

Sketch:



#9031
5/8\"

Prepared By:
LONG
ENGINEERING, INC.

2550 Heritage Ct
Suite 250
Atlanta, Georgia 30339
Tel 770.951.2495
Fax 770.951.2496
www.longeng.com

- ① 15.85' FROM EDGE OF TRAVEL LANE.
- ② 156.8' FROM END OF GUARDRAIL.
- ③ 176.3' FROM SIGN "FOOD EXIT 10".

LONG ENGINEERING, INC.

HORIZONTAL CONTROL DELTA
STATION NAME: #9032

P.I. Number: 0001757 County: FULTON State Plane Zone: GA WEST

Described By: T. WOMACK III Date: 12/31/2017 Units of Measure: US SURVEY FT.

Horizontal Datum: NAD83(1994) Vertical Datum: NAVD88 Elevation: 1077.738

Northing (Y): 1476629.6411 Easting (X): 2263209.0211

Visible From Ground To: #9031 Visible From Ground To: #9033

Horizontal Control Used: CONTROL PACKAGES: PI:001757, 721850, 0007526

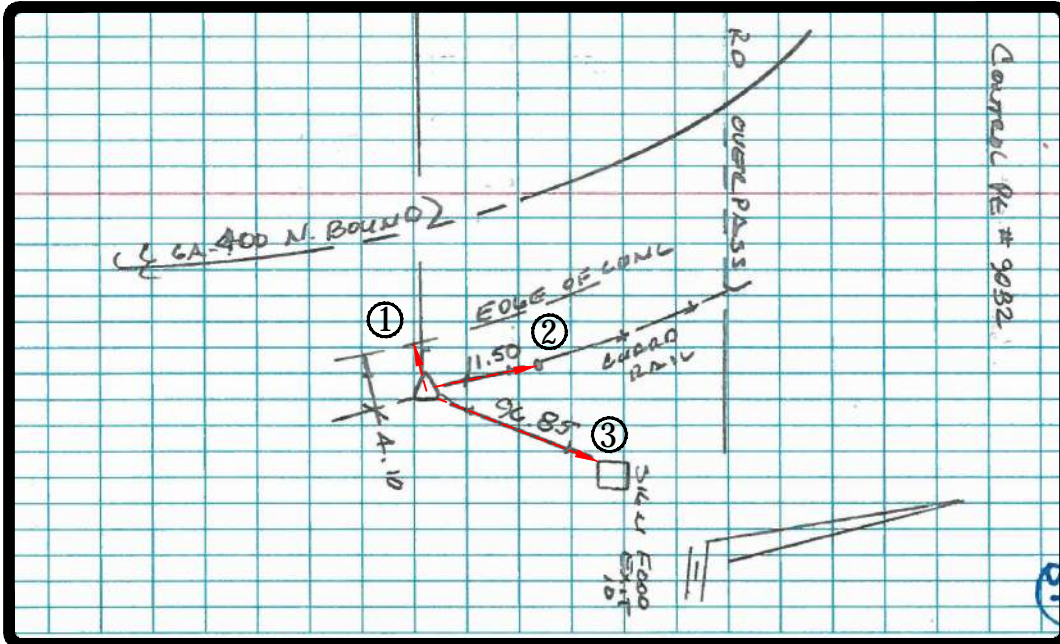
Horizontal Order Accuracy: 3RD

Vertical Control Used: CONTROL PACKAGES: PI:001757, 721850, 0007526

Vertical Order Accuracy: 3RD

To Reach: FROM THE INTERSECTION OF GA 400 NB AND THE HAYNES BRIDGE ROAD OVERPASS, HEAD NORTH ALONG GA 400 FOR A DISTANCE OF 0.6 MI. TO THE STATION ON THE RIGHT

Sketch:



#9032
5/8" REBAR

Prepared By:
LONG
ENGINEERING, INC.

2550 Heritage Ct
Suite 250
Atlanta, Georgia 30339
Tel 770.951.2495
Fax 770.951.2496
www.longeng.com

- ① 4.1' FROM EDGE OF CONCRETE.
- ② 11.5' FROM END OF GUARDRAIL.
- ③ 96.85' FROM SOUTHWEST CORNER OF SIGN "FOOD EXIT 10".

LONG ENGINEERING, INC.

HORIZONTAL CONTROL DELTA
STATION NAME: #9033

P.I. Number: 0001757 County: FULTON State Plane Zone: GA WEST

Described By: T. WOMACK III Date: 12/31/2017 Units of Measure: US SURVEY FT.

Horizontal Datum: NAD83(1994) Vertical Datum: NAVD88 Elevation: 1087.366

Northing (Y): 1477129.1927 Easting (X): 2263525.5779

Visible From Ground To: #9032 Visible From Ground To: #9034

Horizontal Control Used: CONTROL PACKAGES: PI:001757, 721850, 0007526

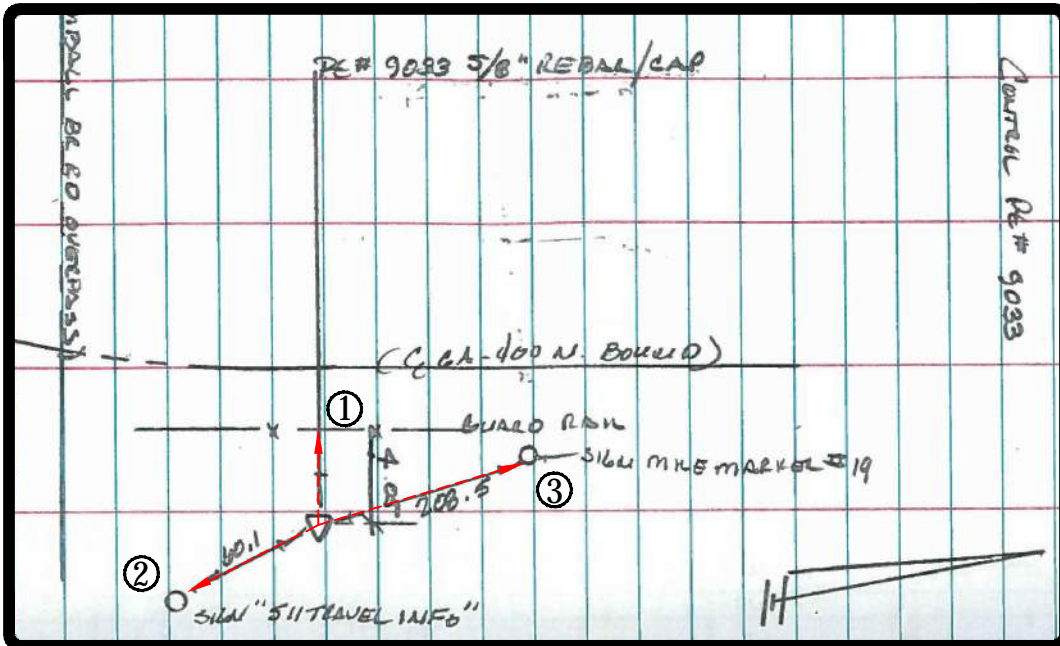
Horizontal Order Accuracy: 3RD

Vertical Control Used: CONTROL PACKAGES: PI:001757, 721850, 0007526

Vertical Order Accuracy: 3RD

To Reach: FROM THE INTERSECTION OF GA 400 NB AND THE KIMBALL
BRIDGE ROAD OVERPASS, HEAD NORTH ALONG GA 400 FOR A
DISTANCE OF 300' TO THE STATION ON THE RIGHT

Sketch:



#9033
5/8" REBAR

Prepared By:
LONG
ENGINEERING, INC.

2550 Heritage Ct
Suite 250
Atlanta, Georgia 30339
Tel 770.951.2495
Fax 770.951.2496
www.longeng.com

- ① 4.05' FROM EDGE OF GUARDRAIL.
- ② 60.1' FROM SIGN "511 TRAVEL INFO".
- ③ 208.5' FROM MILE MARKER 19 SIGN.

LONG ENGINEERING, INC.

HORIZONTAL CONTROL DELTA
STATION NAME: #9034

P.I. Number: 0001757 County: FULTON State Plane Zone: GA WEST

Described By: T. WOMACK III Date: 12/31/2017 Units of Measure: US SURVEY FT.

Horizontal Datum: NAD83(1994) Vertical Datum: NAVD88 Elevation: 1073.238

Northing (Y): 1477975.4366 Easting (X): 2263887.7731

Visible From Ground To: #9033 Visible From Ground To: #9035

Horizontal Control Used: CONTROL PACKAGES: PI:001757, 721850, 0007526

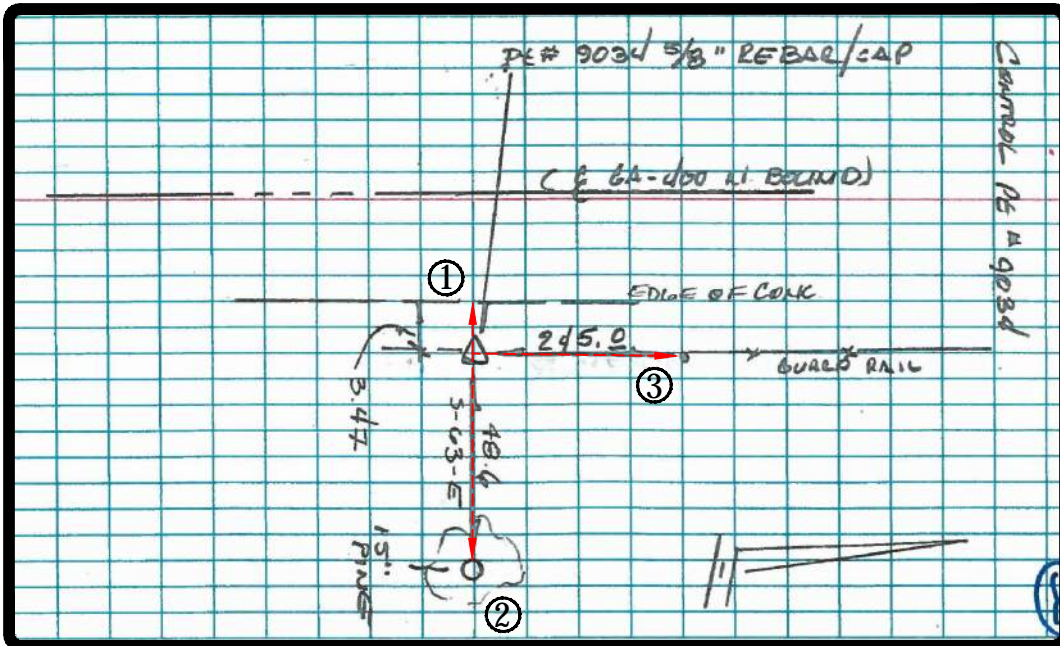
Horizontal Order Accuracy: 3RD

Vertical Control Used: CONTROL PACKAGES: PI:001757, 721850, 0007526

Vertical Order Accuracy: 3RD

To Reach: FROM THE INTERSECTION OF GA 400 NB AND THE KIMBALL
BRIDGE ROAD OVERPASS, HEAD NORTH ALONG GA 400 FOR A
DISTANCE OF 0.2 MI. TO THE STATION ON THE RIGHT

Sketch:



#9034
5/8" REBAR

Prepared By:
LONG
ENGINEERING, INC.

2550 Heritage Ct
Suite 250
Atlanta, Georgia 30339
Tel 770.951.2495
Fax 770.951.2496
www.longeng.com

- ① 3.5' FROM EDGE OF CONCRETE.
- ② 48.6' FROM 15" PINE TREE.
- ③ 245.0' FROM END OF GUARDRAIL.

LONG ENGINEERING, INC.

HORIZONTAL CONTROL DELTA
STATION NAME: #10023

P.I. Number: 0001757 County: FULTON State Plane Zone: GA WEST

Described By: T. WOMACK III Date: 12/31/2017 Units of Measure: US SURVEY FT.

Horizontal Datum: NAD83(1994) Vertical Datum: NAVD88 Elevation: 1082.608

Northing (Y): 1477681.3250 Easting (X): 2263602.1327

Visible From Ground To: #10022 Visible From Ground To: #10024

Horizontal Control Used: CONTROL PACKAGES: PI:001757, 721850, 0007526

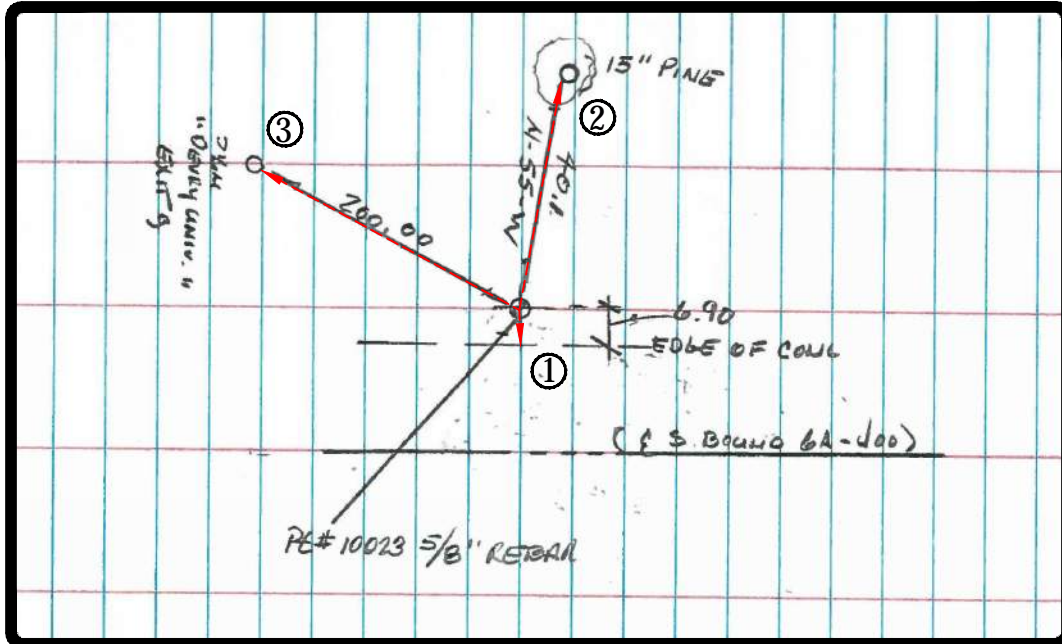
Horizontal Order Accuracy: 3RD

Vertical Control Used: CONTROL PACKAGES: PI:001757, 721850, 0007526

Vertical Order Accuracy: 3RD

To Reach: FROM THE INTERSECTION OF GA 400 SB AND OLD MILTON
PARKWAY OVERPASS, HEAD SOUTH ALONG GA 400 FOR A
DISTANCE OF 0.5 MI. TO THE STATION ON THE RIGHT

Sketch:



Prepared By:

LONG
ENGINEERING, INC.

2550 Heritage Ct
Suite 250
Atlanta, Georgia 30339
Tel 770.951.2495
Fax 770.951.2496
www.longeng.com

#10023

PK NAIL

- ① 6.9' FROM EDGE OF CONCRETE.
- ② 40.1' FROM 15" PINE TREE.
- ③ 200.0' FROM SIGN "DEVRY UNIVERSITY / EXIT 9".

LONG ENGINEERING, INC.

HORIZONTAL CONTROL DELTA
STATION NAME: #10024

P.I. Number: 0001757 County: FULTON State Plane Zone: GA WEST

Described By: T. WOMACK III Date: 12/31/2017 Units of Measure: US SURVEY FT.

Horizontal Datum: NAD83(1994) Vertical Datum: NAVD88 Elevation: 1076.224

Northing (Y): 1476815.3943 Easting (X): 2263181.4781

Visible From Ground To: #10023 Visible From Ground To: #10025

Horizontal Control Used: CONTROL PACKAGES: PI:001757, 721850, 0007526

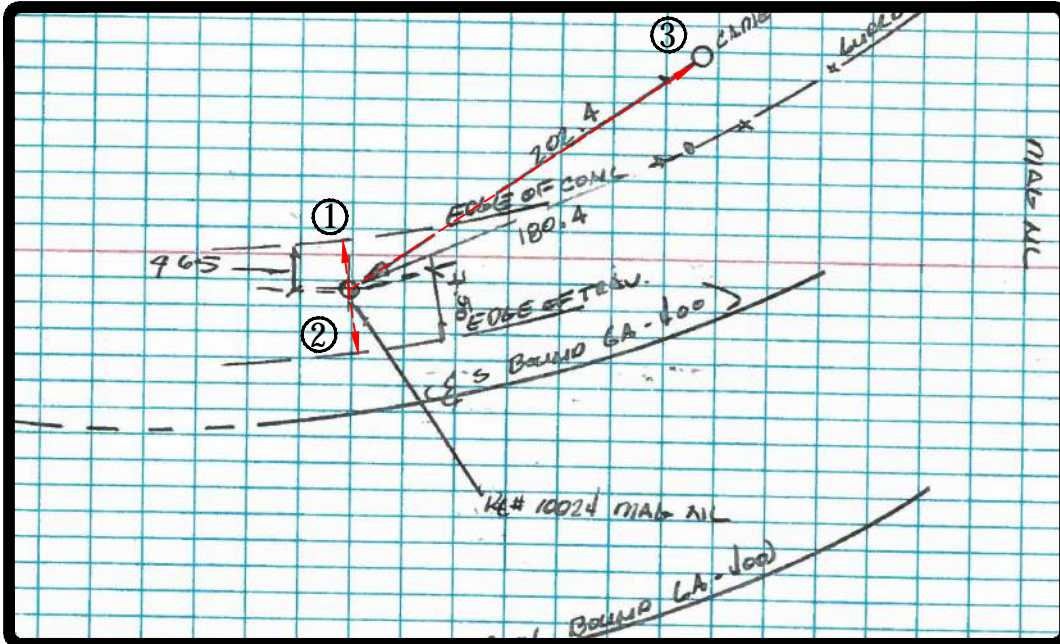
Horizontal Order Accuracy: 3RD

Vertical Control Used: CONTROL PACKAGES: PI:001757, 721850, 0007526

Vertical Order Accuracy: 3RD

To Reach: FROM THE INTERSECTION OF GA 400 SB AND THE KIMBALL
BRIDGE ROAD OVERPASS, HEAD SOUTH ALONG GA 400 FOR A
DISTANCE OF 350' TO THE STATION ON THE RIGHT

Sketch:



#10024
PK NAIL

Prepared By:
LONG
ENGINEERING, INC.

2550 Heritage Ct
Suite 250
Atlanta, Georgia 30339
Tel 770.951.2495
Fax 770.951.2496
www.longeng.com

- ① 4.7' FROM EDGE OF CONCRETE.
- ② 7.5' FROM EDGE OF TRAVEL LANE.
- ③ 202.4' FROM CAMERA POLE.

LONG ENGINEERING, INC.

HORIZONTAL CONTROL DELTA
STATION NAME: #10025

P.I. Number: 0001757 County: FULTON State Plane Zone: GA WEST

Described By: T. WOMACK III Date: 12/31/2017 Units of Measure: US SURVEY FT.

Horizontal Datum: NAD83(1994) Vertical Datum: NAVD88 Elevation: 1051.008

Northing (Y): 1476247.2817 Easting (X): 2262587.6282

Visible From Ground To: #10024 Visible From Ground To: #10026

Horizontal Control Used: CONTROL PACKAGES: PI:001757, 721850, 0007526

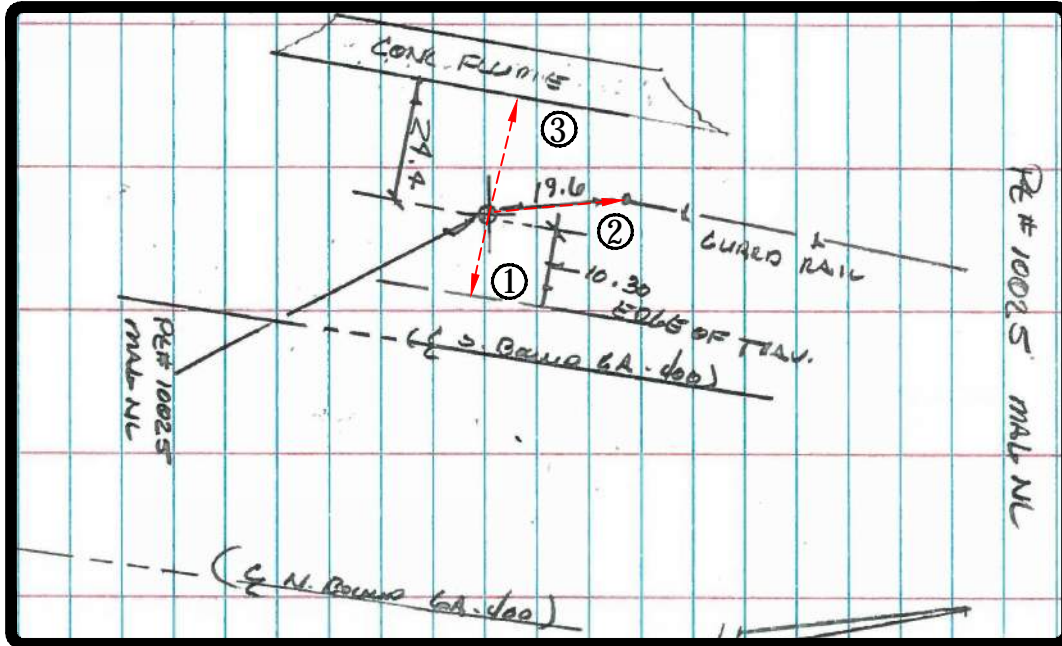
Horizontal Order Accuracy: 3RD

Vertical Control Used: CONTROL PACKAGES: PI:001757, 721850, 0007526

Vertical Order Accuracy: 3RD

To Reach: FROM THE INTERSECTION OF GA 400 SB AND THE KIMBALL
BRIDGE ROAD OVERPASS, HEAD SOUTH ALONG GA 400 FOR A
DISTANCE OF 0.22 MI. TO THE STATION ON THE RIGHT

Sketch:



#10025
PK NAIL

Prepared By:
LONG
ENGINEERING, INC.

2550 Heritage Ct
Suite 250
Atlanta, Georgia 30339
Tel 770.951.2495
Fax 770.951.2496
www.longeng.com

- ① 10.3' FROM EDGE OF TRAVEL LANE.
- ② 19.6' FROM END OF GUARDRAIL.
- ③ 24.4' FROM EDGE OF CONCRETE FLUME.

LONG ENGINEERING, INC.

HORIZONTAL CONTROL DELTA
STATION NAME: #10050

P.I. Number: 0001757 County: FULTON State Plane Zone: GA WEST

Described By: M.T.ALLIGOOD Date: 12/31/2017 Units of Measure: US SURVEY FT.

Horizontal Datum: NAD83(1994) Vertical Datum: NAVD88 Elevation: 1016.707

Northing (Y): 1452589.1726 Easting (X): 2244606.5200

Visible From Ground To: #10062 Visible From Ground To: #10051

Horizontal Control Used: CONTROL PACKAGES: PI:001757, 721850, 0007526

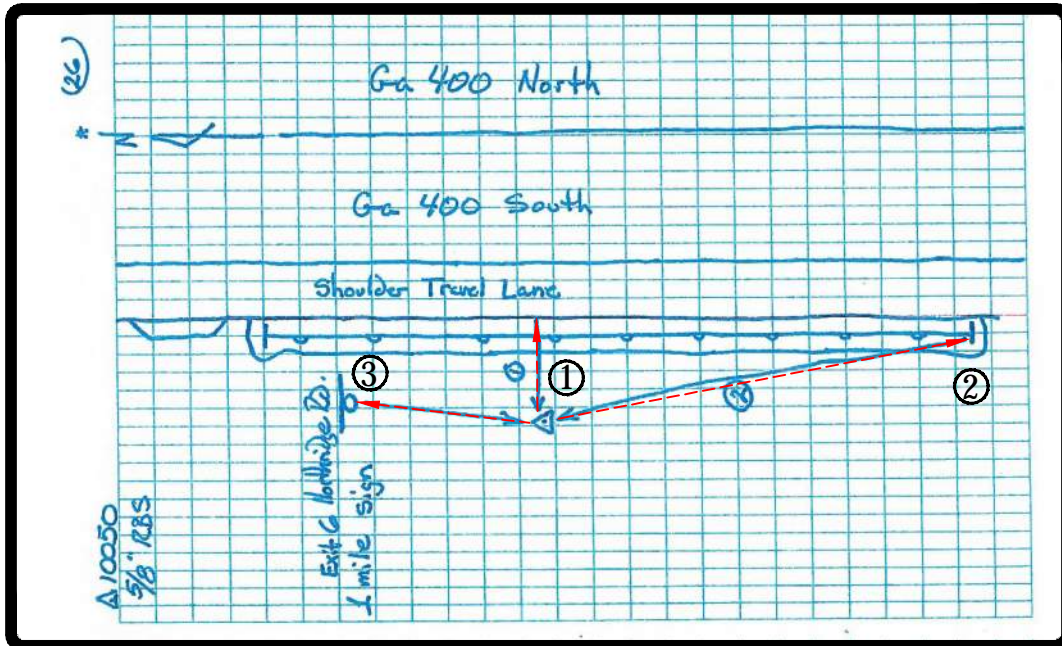
Horizontal Order Accuracy: 3RD

Vertical Control Used: CONTROL PACKAGES: PI:001757, 721850, 0007526

Vertical Order Accuracy: 3RD

To Reach: FROM THE INTERSECTION OF GA 400 SB AND THE ROBERTS DRIVE UNDERPASS, HEAD SOUTH ALONG GA 400 FOR A DISTANCE OF 0.74 MI. TO THE STATION ON THE RIGHT

Sketch:



#10050
5/8" REBAR

Prepared By:
LONG
ENGINEERING, INC.

2550 Heritage Ct
Suite 250
Atlanta, Georgia 30339
Tel 770.951.2495
Fax 770.951.2496
www.longeng.com

- ① 10.2' FROM EDGE OF TRAVEL LANE.
- ② 153.4' FROM END OF GUARDRAIL.
- ③ 178.9' FROM SIGN "EXIT 6".

LONG ENGINEERING, INC.

HORIZONTAL CONTROL DELTA
STATION NAME: #10051

P.I. Number: 0001757 County: FULTON State Plane Zone: GA WEST

Described By: M.T.ALLIGOOD Date: 12/31/2017 Units of Measure: US SURVEY FT.

Horizontal Datum: NAD83(1994) Vertical Datum: NAVD88 Elevation: 1047.962

Northing (Y): 1451581.4782 Easting (X): 2244442.2731

Visible From Ground To: #10050 Visible From Ground To: #10052

Horizontal Control Used: CONTROL PACKAGES: PI:001757, 721850, 0007526

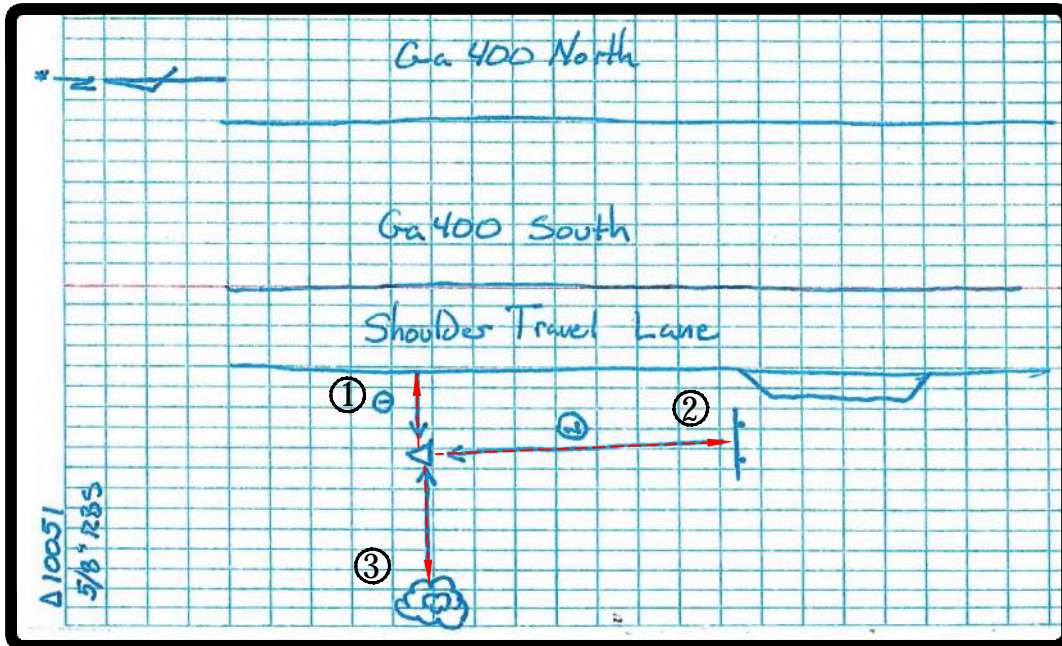
Horizontal Order Accuracy: 3RD

Vertical Control Used: CONTROL PACKAGES: PI:001757, 721850, 0007526

Vertical Order Accuracy: 3RD

To Reach: FROM THE INTERSECTION OF GA 400 SB AND THE ROBERTS DRIVE OVERPASS, HEAD SOUTH ALONG GA 400 FOR A DISTANCE OF 0.10 MI. TO THE STATION ON THE RIGHT

Sketch:



#10051
5/8" REBAR

Prepared By:
LONG
ENGINEERING, INC.

2550 Heritage Ct
Suite 250
Atlanta, Georgia 30339
Tel 770.951.2495
Fax 770.951.2496
www.longeng.com

① 3.0' FROM EDGE OF TRAVEL LANE.

② 201.4' FROM SIGN "EMERGENCY PULL OFF".

③ 42.5' FROM 18" SWEETGUM TREE.

LONG ENGINEERING, INC.

HORIZONTAL CONTROL DELTA
STATION NAME: #10052

P.I. Number: 0001757 County: FULTON State Plane Zone: GA WEST

Described By: M.T.ALLIGOOD Date: 12/31/2017 Units of Measure: US SURVEY FT.

Horizontal Datum: NAD83(1994) Vertical Datum: NAVD88 Elevation: 1056.460

Northing (Y): 1450628.4857 Easting (X): 2244188.0787

Visible From Ground To: #10051 Visible From Ground To: #10053

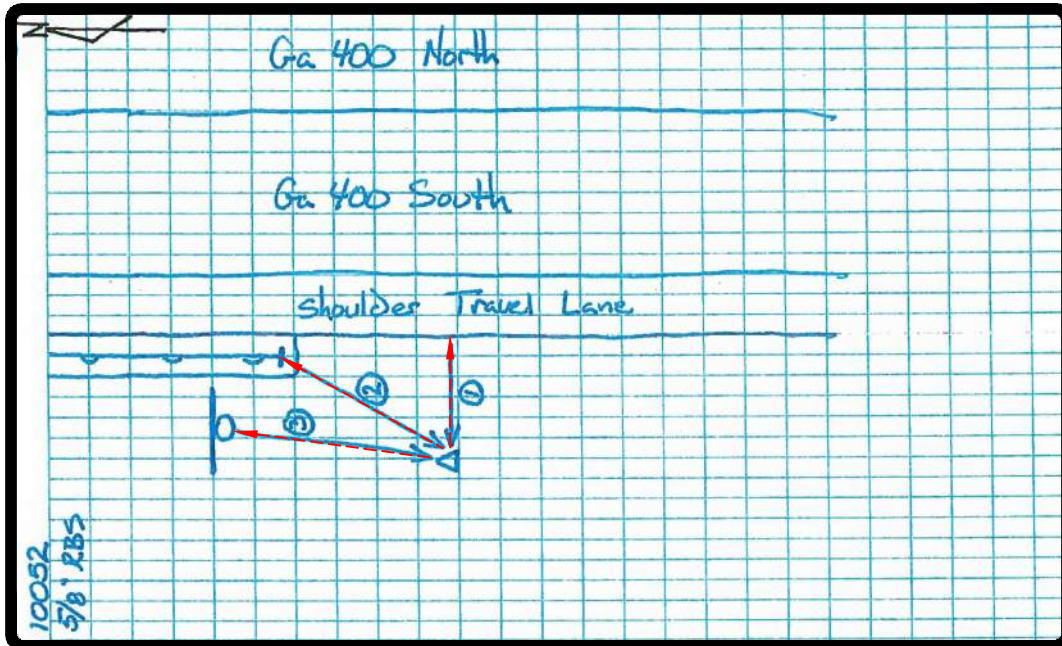
Horizontal Control Used: CONTROL PACKAGES: PI:001757 , 721850 , 0007526

Vertical Control Used: CONTROL PACKAGES: PI:001757 , 721850 , 0007526 Horizontal Order Accuracy: 3RD

Vertical Order Accuracy: 3RD

To Reach: FROM THE INTERSECTION OF GA 400 SB AND THE ROBERTS DRIVE OVERPASS, HEAD SOUTH ALONG GA 400 FOR A DISTANCE OF 0.28 MI. TO THE STATION ON THE RIGHT

Sketch:



#10052
5/8" REBAR

Prepared By:
LONG
ENGINEERING, INC.

2550 Heritage Ct
Suite 250
Atlanta, Georgia 30339
Tel 770.951.2495
Fax 770.951.2496
www.longeng.com

- ① 9.7' FROM EDGE OF TRAVEL LANE.
- ② 68.9' FROM END OF GUARDRAIL.
- ③ 84.1' FROM SIGN "EXIT 6".

LONG ENGINEERING, INC.

HORIZONTAL CONTROL DELTA
STATION NAME: #10053

P.I. Number: 0001757 County: FULTON State Plane Zone: GA WEST

Described By: M.T.ALLIGOOD Date: 12/31/2017 Units of Measure: US SURVEY FT.

Horizontal Datum: NAD83(1994) Vertical Datum: NAVD88 Elevation: 1047.898

Northing (Y): 1449639.9742 Easting (X): 2243833.8743

Visible From Ground To: #10052 Visible From Ground To: #9009

Horizontal Control Used: CONTROL PACKAGES: PI:001757 , 721850 , 0007526

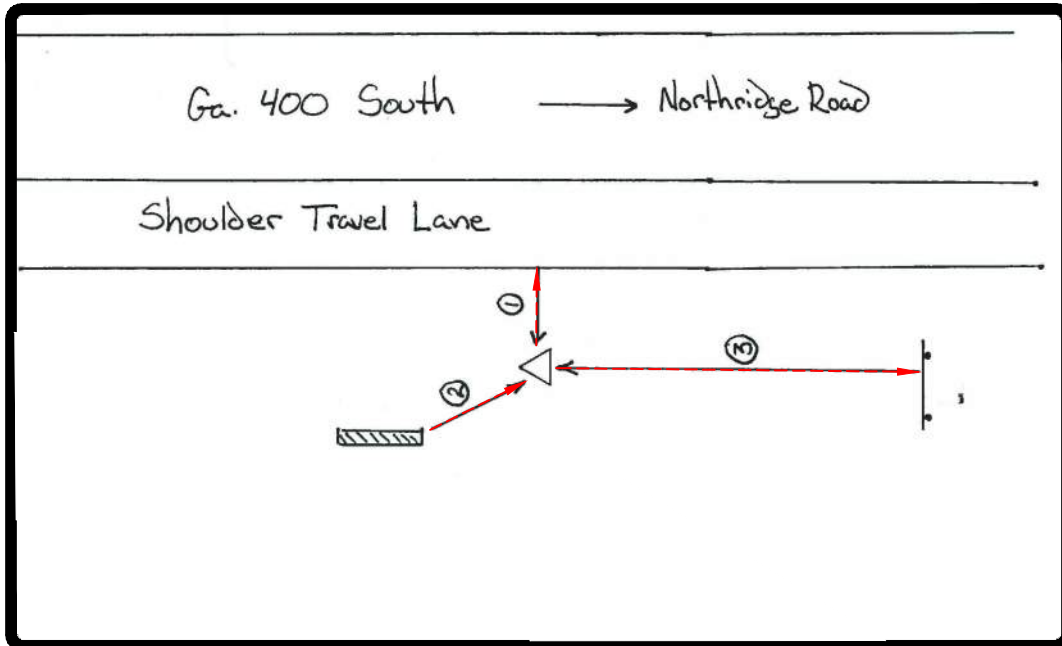
Vertical Control Used: CONTROL PACKAGES: PI:001757 , 721850 , 0007526

Horizontal Order Accuracy: 3RD

Vertical Order Accuracy: 3RD

To Reach: FROM THE INTERSECTION OF GA 400 SB AND THE ROBERTS DRIVE OVERPASS, HEAD SOUTH ALONG GA 400 FOR A DISTANCE OF 0.46 MI. TO THE STATION ON THE RIGHT

Sketch:



#10053
5/8" REBAR

Prepared By:
LONG
ENGINEERING, INC.

2550 Heritage Ct
Suite 250
Atlanta, Georgia 30339
Tel 770.951.2495
Fax 770.951.2496
www.longeng.com

- ① 8.1' FROM EDGE OF CONCRETE.
- ② 25.7' FROM SOUTHEAST CORNER OF HEADWALL.
- ③ 266.3' FROM SIGN "MAYOR EVA CHON MEMORIAL INTERCHANGE".

LONG ENGINEERING, INC.

HORIZONTAL CONTROL DELTA
STATION NAME: #10054

P.I. Number: 0001757 County: FULTON State Plane Zone: GA WEST

Described By: M.T.ALLIGOOD Date: 12/31/2017 Units of Measure: US SURVEY FT.

Horizontal Datum: NAD83(1994) Vertical Datum: NAVD88 Elevation: 1037.922

Northing (Y): 1444135.2953 Easting (X): 2241531.3318

Visible From Ground To: #9007 Visible From Ground To: #10055

Horizontal Control Used: CONTROL PACKAGES: PI:001757 , 721850 , 0007526

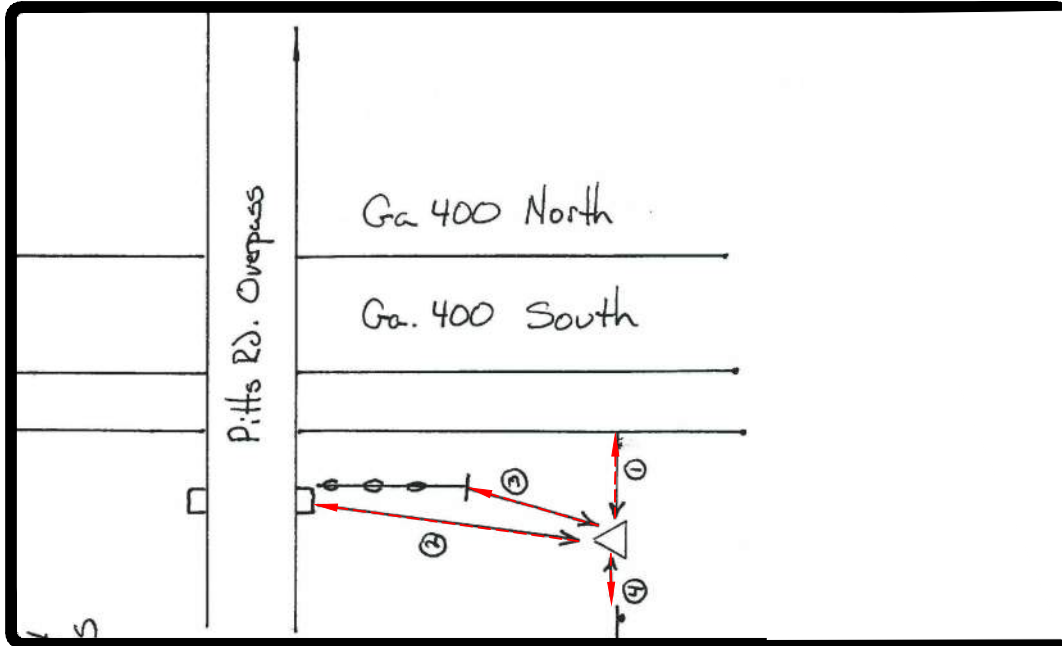
Horizontal Order Accuracy: 3RD

Vertical Control Used: CONTROL PACKAGES: PI:001757 , 721850 , 0007526

Vertical Order Accuracy: 3RD

To Reach: FROM THE INTERSECTION OF GA 400 SB AND THE PITTS
ROAD OVERPASS, HEAD SOUTH ALONG GA 400 FOR A DISTANCE
OF 100' TO THE STATION ON THE RIGHT

Sketch:



#10054
5/8" REBAR

Prepared By:
LONG
ENGINEERING, INC.

2550 Heritage Ct
Suite 250
Atlanta, Georgia 30339
Tel 770.951.2495
Fax 770.951.2496
www.longeng.com

- ① 4.5' FROM EDGE OF CONCRETE.
- ② 150.7' FROM BRIDGE COLUMN.
- ③ 64.3' END OF GUARDRAIL.
- ④ 4.8' FROM SIGN "55 MPH".